



# On A Mission of Discovery.

GOLD, GRAPHITE & CRITICAL MINERALS EXPLORER.

Three drill-ready projects. One discovery already made. Multiple catalysts in 2026.

**200M oz**

Belt Production  
& Reserves

**3**

Drill-Ready  
Projects

**48.5m**

Discovery  
Intercept

## INVESTMENT HIGHLIGHTS

- Prime Location: Abitibi Gold Belt
- 3 Drill-Ready Projects (Gold + Graphite)
- Discovery In Hand: 48.5m @ 0.85 g/t Au
- Adjacent to Multi-Billion Dollar Companies
- Experienced Team | Micro-Cap Opportunity

# Forward Looking Statements

Certain statements included in this presentation constitute forward-looking statements, including those identified by the words “proposed”, “will”, “anticipate”, “believe”, “plan”, “estimate”, “expect”, “intend”, “may”, “should” and similar words and expressions to the extent they relate to iMetal Resources Inc. (the “Company”) or its management. The forward-looking statements are not historical facts and are based on current expectations and various estimates, factors and assumptions. They therefore involve known and unknown risks, uncertainties and other factors. Any forward-looking statements represent the Company’s estimates only as of the date of this presentation and should not be relied upon as representing the Company’s estimates as of any subsequent date.

The material factors and assumptions that were applied in making the forward-looking statements in this presentation include: execution of the Company’s existing plans or exploration programs for its properties, which may change due to changes in the views of the Company, or if new information arises which makes it prudent to change such plans or programs; and the accuracy of current interpretations of geochemical, geophysical, drilling and other exploration results, since new information or new interpretations of existing information may result in changes in the Company’s expectations.

Readers should not place undue reliance on the Company’s forward-looking statements, as the Company’s actual results, performance or achievements may differ materially from any future results, performance or achievements expressed or implied by such forward-looking statements if known or unknown risks, uncertainties or other factors affect the Company’s business, or if the Company’s estimates or assumptions prove inaccurate. Therefore, the Company cannot provide any assurance that such forward-looking statements will materialize. The Company disclaims any intention or obligation to update or revise any forward-looking statements, whether as a result of new information, future events or otherwise.

R. Tim Henneberry, P.Ge (BC), a Director of iMetal Resources Inc. and a Qualified Person as defined in NI 43-101, has reviewed and approved the technical information in this presentation.

# Why We Are Uniquely Positioned

*Location, Location, Location...*

## 01 Prime Location

All projects sit within the Abitibi Greenstone Gold Belt — responsible for 200M oz of historical gold production, home to Newmont, Agnico Eagle, and IAMGOLD.

## 03 Adjacent to Major Deposits

Contiguous to MLM's Jubly deposit — IND 31.7Mt @ 0.98 g/t = **1.01M oz gold<sup>1</sup>**; INF 109.5Mt @ 0.89 g/t = **3.17M oz gold<sup>1</sup>**

## 05 Potential Catalysts in 2026

- Next phase drilling Gowganda West
- Next phase drilling at Carheil
- Executed LOI on an antimony & silver project in Bosnia
- Ongoing target generation review at Ghost Mountain

## 02 Discovery Already Made

Gowganda West: Initial discovery hole of 48.5m @ 0.85 g/t Au from 316.5m, including 8.0m of 2.97 g/t Au — with multiple untested zones remaining.

## 04 Critical Minerals Upside

Carheil (Quebec): Natural flake graphite, 3 horizons discovered, grades up to 12.9% Cg. Canada is prioritizing domestic critical mineral supply chains to reduce dependence on China, which controls ~70% of global graphite output. Canadian-sourced graphite is a federal strategic priority.

## 06 Capital Structure

Market Cap: ~C\$4.0M | Shares O/S: 40,361,068 | Fully Diluted: 79,206,030

Key insiders: Key Strategics and Insider ownership is ~70%

# Why the Abitibi Greenstone Belt?

*The world's most productive gold belt — and iMetal has three projects inside it.*

**200M oz**

Historical gold  
production & reserves

**21**

Deposits > 3M oz  
in the belt

**100+**

Producing mines  
in the belt

**70M oz**

Along the  
Porcupine-Destor Fault

## WORLD'S LARGEST GOLD PRODUCERS ACTIVE IN THE BELT:

**Newmont Corporation (Goldcorp)**  
NYSE: NEM

**Agnico Eagle (Kirkland Lake Gold)**  
NYSE: AEM

**IAMGOLD Corp**  
NYSE: IAG

**Osisko Metals Inc.**  
TSE: OM.TO

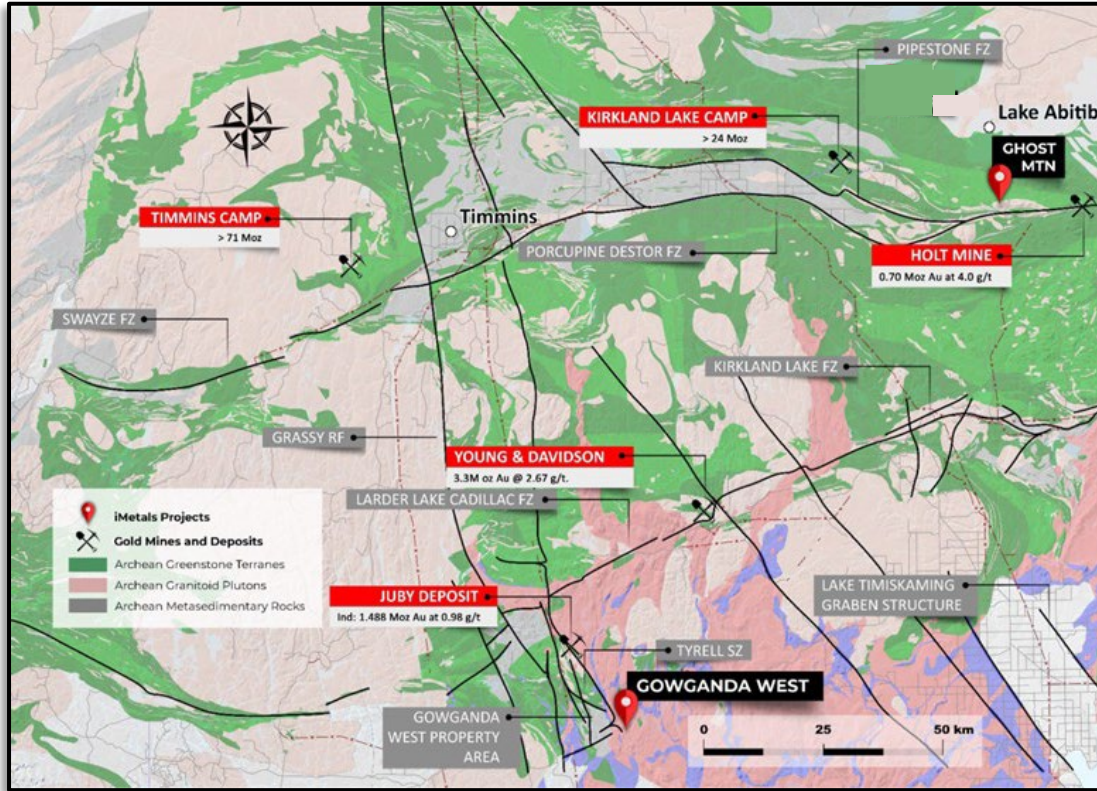
*"The best place to explore for gold is within sight of the headframe of a gold mine."*

— Common saying in the Abitibi, where iMetal's ground is surrounded by producing operations

**Belt Past Production: 200M oz Au | 400M oz Ag | 15B tons Cu | 35B tons Zn**

# Micro-Cap Ground in a Macro-Cap Belt

The Abitibi Greenstone Belt — home to the world's largest gold producers, and iMetal's three projects



## NEIGHBOURS & THEIR SCALE\*

**Agnico Eagle Mines**  
Holt Mine + Detour Lake

Mkt Cap\*  
~C\$89B

**MacFarlane Lake Mining (MLM)**  
Juby Deposit (contiguous)

Mkt Cap\*  
~C\$137M

**Newmont**  
\$75M JV at Holt Complex

Mkt Cap\*  
~US\$114B

**Alamos Gold Inc.**  
Young-Davidson

Mkt Cap\*  
~US\$16.5B



Mkt Cap  
~C\$4M

**Same geology.**  
34x – 28,000x valuation gap.

\*As of May 20, 2026

# Project Portfolio Overview

Three assets at different stages — all in proven Archean Greenstone Belt geology

## GOWGANDA WEST

Planned Drilling

Ontario | Gold | 8,007 ha

### NEIGHBOURS:

MLM Juby deposit — 1.01M oz IND + 3.17M oz INF<sup>1</sup> — directly contiguous to Gowganda West

### KEY RESULT:

Discovery Hole: 48.5m @ 0.85 g/t Au  
Incl. 8.0m @ 2.97 g/t Au

### 2026 CATALYST:

2026: 2,500–5,000m planned

## GHOST MOUNTAIN

Ongoing Evaluation

Ontario | Gold | 131.6 ha

### NEIGHBOURS:

5km west of Agnico Eagle's Holt Mine Complex.  
Straddling Porcupine-Destor Fault (70M oz)

### KEY RESULT:

Ground truthing complete,  
awaiting results

### 2026 CATALYST:

2026: Target generation review  
ongoing

## CARHEIL

Planned Drilling

Quebec | Flake Graphite | 3,005 ha

### NEIGHBOURS:

20km W of BHP Billiton's Selbai Zinc Mine.  
20km N of Hecla's Casa Berardi Mine.

### KEY RESULT:

3 horizons discovered.  
Best: 12.9% Cg over 1.2m

### 2026 CATALYST:

2026: ~2,000m drill program  
planned

# Gowganda West

GOLD EXPLORATION • ONTARIO • ABITIBI  
GREENSTONE BELT

## SIZE:

8,007 ha (100% owned)

## ACCESS:

Road-accessible, 90 min from Kirkland Lake

## KEY CONTIGUOUS NEIGHBOUR:

McFarlane Lake Mining (MLM) Juby Deposit

## JUBY SIZE:

IND 31.7Mt 0.98 g/t 1.01M oz gold; INF 109.5Mt 0.89 g/t 3.17M oz gold<sup>1</sup> contained in 4 distinct ore bodies over roughly 6 km of strike within a SE trending +2km wide gold corridor which trends onto Gowganda West

## STRUCTURE:

MLM Parallel structures (826 Zone) minimally explored trends into area of IMR recent drilling (same zone)

MLM 826 Zone hole JU13-137 36.3m at 0.84 g/t gold

## ★ DISCOVERY HOLE

**48.5m @ 0.85 g/t Au from 316.5m depth**

Including 8.0m @ 2.97 g/t Au

1: McCracken, T., McIntyre, P. and Steyn, J. (2025). NI 43-101 Technical Report and Mineral Resource Estimate Update for the Juby Gold Deposit. Prepared from MacFarlane Lake Mining Corp. 2025-Nov-21.

# Drill Zones & 2026 Plan



## New Zone (IMGW-23-04)

SE-trending alteration/mineralization zone parallel to Juby Zones. Different style than shear-hosted system — opens up more of the property as prospective.

► **48.5m @ 0.85 g/t Au | Incl. 8.0m @ 2.97 g/t Au**

## Zone 1

Quartz veins in sericite alteration zone. Multiple mineralized trends confirmed by 2019 and 2022 drilling.

► **2021 grab samples: 27.2 g/t and 16.35 g/t Au**

## Zone 3

Quartz veins in sericite alteration zone. Alteration and mineralization increasing toward SW.

► **2021 grab samples: 67.9, 29.6 and 11.3 g/t Au**

## 2025 IMR DRILL RESULTS

- 16.65m at 1.25 g/t gold within 62.25m at 0.61 g/t gold
- 6.2m at 1.116 g/t gold
- 65.75m at 0.419 g/t gold

# Ghost Mountain Project

GOLD EXPLORATION • ONTARIO • PORCUPINE-DESTOR FAULT



## LOCATION

East of Kirkland Lake, Ontario

## SIZE

131.6 hectares — 100% owned

## FAULT ZONE

Straddles the Porcupine-Destor Fault (hosts 70M oz of gold)

## KEY NEIGHBOR

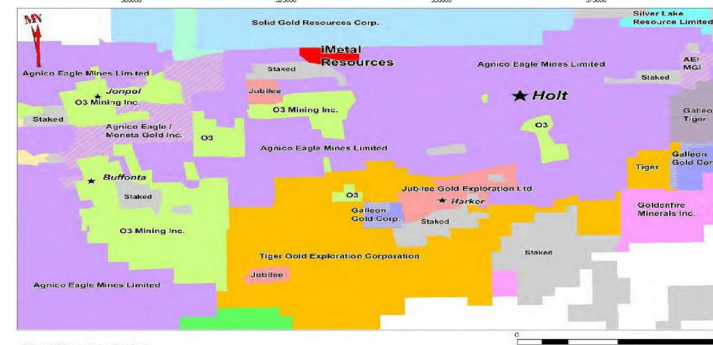
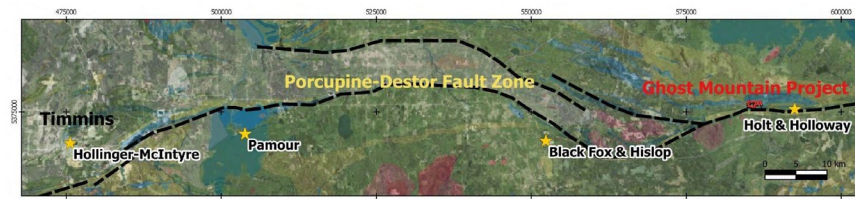
5km west of Agnico Eagle's Holt Mine Complex (\$75M JV with Newmont; surrounded on 3 sides by Agnico Eagle)

## OTHER ACTIVE OPERATORS

O3 Mining Inc. (Osisko spin-out) active in area

## GEOLOGICAL CONTEXT

The Porcupine-Destor Fault is one of the most significant gold-controlling structures in the Abitibi. It extends from Timmins to Quebec and has produced over 70M oz of gold at various points along its length — including at the Hollinger-McIntyre (>30M oz), Holt-Holloway, and Black Fox complexes.



Ghost Mountain Project  
at 2022-August-22

Proximity to mineralization on an adjacent property does not guarantee the presence of mineralization on the property in question.

TSXV: IMR | OTCQB: IMRFF | Frankfurt: A7VA | May 2026

# Carheil Project

FLAKE GRAPHITE • QUEBEC • CRITICAL MINERALS

## WHY FLAKE GRAPHITE NOW?

Natural flake graphite is a critical input for EV lithium-ion battery anodes. Demand is projected to grow 8–10x by 2030 as electric vehicle adoption accelerates. Canada is a priority jurisdiction for battery supply chain development.

## SIZE:

3,005 hectares — 100% owned

## LOCATION:

280 km NNW of Val-d'Or, Quebec  
130 km north of La Sarre

## DISCOVERY:

iMetal originally discovered graphite here in 2016.  
2023 program found 2 additional horizons.

## KEY NEIGHBOURS:

20km W — BHP Billiton's Selbai Zinc Mine

20km N — Hecla Mining's Casa Berardi Mine

40km SE — Agnico Eagle's Detour Lake Gold Mine

True widths of drill intercepts are unknown at this time.

# 2023 Drill Results — 3 Horizons Discovered



## Zone A (Historic)

- 7.08% Cg over 3.90m (incl. 11.5% Cg over 1.9m)
- 5.11% Cg over 4.65m (incl. 12.9% Cg over 1.2m)
- 1.93% Cg over 4.90m

## Zone B (New)

- 2.89% Cg over 10.55m

## Zone C (New)

- 2.53% Cg over 8.45m (incl. 7.05% Cg over 1.5m)
- 4.25% Cg over 5.30m (incl. 7.90% Cg over 1.2m)
- 2.76% Cg over 4.70m (incl. 4.70% Cg over 2.1m)

All zones open in all directions | 2026: ~2,000m drill program planned | True widths unknown at this time

# 2025–2026 Exploration Roadmap & Catalysts

Upcoming drill programs represent significant near-term share price catalysts

<p>2025 <span>✓ COMPLETE</span></p> <p><b>Gowganda West Drilling</b></p> <p><i>6 holes, ~2,600m completed</i></p> <p>Drilled to follow up discovery hole. Assay results pending — major near-term catalyst expected.</p>	<p>2026 <span>🕒 IN PROGRESS</span></p> <p><b>Ghost Mountain</b></p> <p><i>Target generation review</i></p> <p>Target prioritization from geophysics &amp; geochemistry. Drill permitting to commence upon completion.</p>	<p>2026 <span>📅 PLANNED</span></p> <p><b>Gowganda West + Carheil</b></p> <p><i>2,500–5,000m + 2,000m</i></p> <p>Major drill campaigns at both projects. Key near-term catalysts.</p>	<p>2026 <span>📅 PLANNED</span></p> <p><b>Antimony &amp; Silver LOI</b></p> <p><i>2,500–5,000m + 2,000m</i></p> <p>Executed LOI on an antimony &amp; silver project in Bosnia</p>
--------------------------------------------------------------------------------------------------------------------------------------------------------------------------------------------------------------------------	---------------------------------------------------------------------------------------------------------------------------------------------------------------------------------------------------------------------------	--------------------------------------------------------------------------------------------------------------------------------------------------------------------------------------	----------------------------------------------------------------------------------------------------------------------------------------------------------------------------------

**PIPELINE: New Potential Project Under Review — The Cemernica Mine | [ ADD DETAILS AS AVAILABLE ]**

# Experienced Management Team



*Proven operators with track records of value creation in junior mining*

**TRACK RECORD HIGHLIGHT:** Saf Dhillon was a key member of U.S. Geothermal Inc. — grew from ~USD \$2M startup to a profitable Independent Renewable Energy Power Producer with 3 operating plants, successfully uplisted from TSX to NYSE MKT.



## Satvir 'Saf' Dhillon

**President & CEO**

★ **U.S. Geothermal: \$2M → NYSE-listed profitable power producer**

Partner at Cross Davis & Company LLP Chartered Professional Accountants, specializing in public company accounting and management services. CFO experience at multiple TSX Venture Exchange companies. Prior roles at Appleby, Davidson &



## R. Tim Henneberry, P.Geo

**Director & Qualified Person (NI 43-101)**

★ **43+ years exploration experience — precious & base metals**

Professional Geoscientist (BC) with 46+ years of domestic and international exploration for base and precious metals. Founded Mammoth Geological Ltd. (1991). Senior management and director roles at numerous TSX Venture and CSE-listed companies.



## Scott Davis

**Director**

★ **Great Bear Resources, First Helium, ValOre Metals**

Partner at Cross Davis & Company LLP Chartered Professional Accountants, specializing in public company accounting and management services. CFO experience at multiple TSX Venture Exchange companies. Prior roles at Appleby, Davidson & Company LLP, and Pacific Opportunity Capital.



## Robert J. Scott, CPA, CA, CFA

**Advisor**

★ **Great Bear Resources, First Helium, ValOre Metals**

CPA, CA and CFA Charterholder. 20+ years in accounting, corporate finance, merchant and commercial banking. Founder & President of Corex Management Inc. Past board roles: First Helium Inc., ValOre Metals, Riverside Resources, and Great Bear Resources.

# Corporate Structure

## SHARE CAPITALIZATION — As of May 14, 2026

Shares Issued & Outstanding	40,361,068
Warrants	34,304,962
Options	3,540,000
RSUs	1,000,000
<b>TOTAL FULLY DILUTED</b>	<b>79,206,030</b>

## KEY METRICS

Market Capitalization

**~C\$4 Million**

Cash & Equivalents

**C\$50k as of Q4 2025**

Closing Price

**C\$0.105 (May 13, 2026 close)**

52-Week Range

**C\$0.04 – C\$0.10**

*Management Ownership is ~60%, aligning management with shareholders*

# Ready to Learn More?

*Three drill-ready projects. One discovery in hand. Multiple catalysts in 2026.*

## CONTACT US

**Saf Dhillon — President & CEO**

saf@imetalresources.ca

Mobile: 604-484-3031

800 West Pender Street, Suite 550

Vancouver, British Columbia V6C 2V6

See our [Investor Relations](#) page for the latest news, updates, presentations, events, and more!

**[www.imetalresources.ca](http://www.imetalresources.ca)**

LinkedIn: [linkedin.com/company/imetal-resources-inc](https://www.linkedin.com/company/imetal-resources-inc) | X: @iMetalResources

**TSXV: IMR**  
**OTCQB: IMRFF**  
**Frankfurt: A7VA**